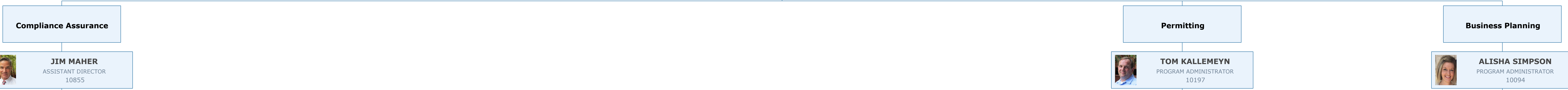




April 2022
 FTE 95.0
 Vacant FTE 6.0
 OPS 13.0

GREG STRONG
 DIRECTOR
 10342

VICTORIA FORD
 ADMINISTRATIVE ASSISTANT III
 11442



JIM MAHER
 ASSISTANT DIRECTOR
 10855

RUSSELL SIMPSON
 GOV OPERATIONS CONSULTANT III
 10098

MONIQUE JORDAN
 ADMINISTRATIVE ASSISTANT I
 10306

TOM KALLEMEYN
 PROGRAM ADMINISTRATOR
 10197

ALISHA SIMPSON
 PROGRAM ADMINISTRATOR
 10094

STUART BARTLETT
 ENVIRONMENTAL CONSULTANT
 11532 - AIR

PAUL DUFF
 ENVIRONMENTAL CONSULTANT/CWE
 20123 - ERP/404

KIM MANN
 ENVIRONMENTAL CONSULTANT
 11436 - ERP/404

JUNE SHI
 PROFESSIONAL ENGINEER III
 11351 - STW

DUNG VO
 PROFESSIONAL ENGINEER III
 10089 - WW/STW

VACANT
 ENG I TO EM
 10497 - ERP/404

BECKY BOBBITT
 ADMINISTRATIVE ASSISTANT I
 10651

CANDI DONALDSON
 GOV OPERATIONS CONSULTANT I
 11241

JOE FOOTE
 DIST COMPUTER SYSTEMS ANALYST
 10391

RONI JORDAN
 ADMINISTRATIVE ASSISTANT I
 10587

CHELSEY CLAYTON
 OPERATIONS ANALYST II
 10847

ERIC FITZSIMMONS
 SR INFO TECH BUSINESS CONSULT
 02162

SARAH HARRIS
 OPS ADMINISTRATIVE ASSISTANT
 37934020

ROXANNE SMITH
 GOV OPERATIONS CONSULTANT III
 20454

ARLENE WILKINSON
 ADMINISTRATIVE ASSISTANT I
 11350

JONI PETRY
 ENVIRONMENTAL ADMINISTRATOR
 11009

VINCE CLARK
 ENVIRONMENTAL MANAGER
 10929

MATT KERSHNER
 ENVIRONMENTAL MANAGER
 11430

MATT HARRIS
 ENVIRONMENTAL MANAGER
 10728

KERI ARMSTRONG
 ENVIRONMENTAL CONSULTANT/CWE
 10944 - SLERP/404

CHRIS AZCUY
 ENVIRONMENTAL CONSULTANT
 11209 - Air

ALLISON CALA
 ENVIRONMENTAL SPECIALIST III/CWE
 10532 - SLERP/404

STEVEN KRUPKA
 ENVIRONMENTAL SPECIALIST II/CWE
 20122 - SLERP/404

JAENA BERNARD
 ENVIRONMENTAL SPECIALIST II
 11132 - WW

STEPHANIE FANKHAUSER
 ENVIRONMENTAL SPECIALIST III
 20012 - PW/STW

ANTONIO CRUZ
 ENVIRONMENTAL SPECIALIST I
 11412 - WW/TANKS

ABBI MATURI
 ENVIRONMENTAL SPECIALIST II
 10747 - WW/PW

BONNIE BRADSHAW
 ENVIRONMENTAL CONSULTANT
 10969 - HW

GRACIE KENNEDY
 ENVIRONMENTAL CONSULTANT
 11038 - ER

LUKE LEWIS
 ENVIRONMENTAL SPECIALIST III
 10806 - HW/ER

MARC LOVALLO
 ENVIRONMENTAL SPECIALIST III
 11391 - AIR/PW

SARAH GRAVE DE PERALTA
 ENGINEERING SPECIALIST I
 10918 - AIR/WW

NATE HARVEY
 ENVIRONMENTAL SPECIALIST III
 10735 - ER/STW

ANNA MCCLURE
 ENVIRONMENTAL SPECIALIST I
 11439 - SW/STW

DONIELLE MCKINLEY
 ENVIRONMENTAL SPECIALIST II
 11568 - ER/TANKS

SALLY LOGAN
 ENVIRONMENTAL CONSULTANT
 10644 - SW

BRIERRA MACK
 ENVIRONMENTAL CONSULTANT
 11495 - Tanks

MEGHAN MALY
 ENVIRONMENTAL SPECIALIST II
 11016 - PW/STW

CARMINE OLIVERO
 ENVIRONMENTAL SPECIALIST III
 10393 - MULTI-PROGRAM

NEIL HORNICK
 PROFESSIONAL GEOLOGIST II
 20420 - ERP/404

CALEB JOHNSTON
 ENVIRONMENTAL SPECIALIST II/CWE
 01408 - SLERP/404

JASON NEUMANN
 ENVIRONMENTAL SPECIALIST III/CWE
 10584 - SLERP/404

BEN PILTZ
 ENVIRONMENTAL SPECIALIST III
 11011 - PW

CHERYL MITCHELL
 ENGINEERING SPECIALIST IV
 10376 - HW

JEFF SCHROER
 ENVIRONMENTAL SPECIALIST III
 10518 - SW

HUNTER JONES
 OPS ENVIRONMENTAL SPECIALIST I
 37934001

TAYLOR PARKS
 ENVIRONMENTAL SPECIALIST III/CWE
 10250 - SLERP/404/WW

KATHERINE HALBERT
 OPS ENVIRONMENTAL SPECIALIST I
 37934054

VICTORIA QUICK
 OPS GOVERNMENT ANALYST I
 37960013

TORI ROHDE
 ENVIRONMENTAL SPECIALIST III
 02719 - AIR/STW

EMMA SACCHITELLO
 ENVIRONMENTAL SPECIALIST I
 10645 - TANKS/HW

CHRISSELL SELLERS
 ENVIRONMENTAL CONSULTANT/CWE
 01896 - SLERP/404

HERNDON SIMS
 ENVIRONMENTAL CONSULTANT
 10390 - WW

EMERSON RAULERSON
 PROFESSIONAL ENGINEER III
 10392 - PW/SW

ELIZABETH KAESER
 OPS ENVIRONMENTAL SPECIALIST I
 37934038

VACANT 04.01.22
 ENVIRONMENTAL SPECIALIST I
 02478 - SLERP/404

VACANT 04.15.22
 ENVIRONMENTAL SPECIALIST II
 11377 - SW/STW

JESSICA SHERMAN
 ENVIRONMENTAL SPECIALIST II
 20745 - SLERP/404

MARK FARAJIAN
 OPS GOVERNMENT ANALYST I
 37960003

SHANNON TAYLOR
 ENVIRONMENTAL CONSULTANT
 11030 - WW

SHANE TIERNEY
 ENVIRONMENTAL CONSULTANT
 20006 - PW

VACANT 05.01.22
 ENVIRONMENTAL SPECIALIST II
 20014 - PW

ALLY OUELLETTE
 OPS ENVIRONMENTAL SPECIALIST I
 37934049

VACANT 04.01.22
 ENVIRONMENTAL SPECIALIST I
 10945 - WW

RYLEE SIMON
 OPS ENVIRONMENTAL SPECIALIST I
 37934048

VACANT 05.20.22
 ENVIRONMENTAL SPECIALIST II
 20114 - HW

KATIE MILLER
 ENVIRONMENTAL MANAGER/CWE
 20919

MICHELLE NEELEY
 ENVIRONMENTAL MANAGER
 10608

BRIAN DURDEN
 ENVIRONMENTAL MANAGER
 10387

TIFFANY ALLEN
 ENVIRONMENTAL SPECIALIST I
 11223 - ERP/404

MEGAN COLLINS
 MENTAL SPECIALIST II/CWE
 11195 - ERP/404

JULIA BOESCH
 ENGINEERING SPECIALIST IV
 11573 - SW

RODNEY CHRISTENSEN
 ENGINEERING SPECIALIST I
 10095 - WW

BRIAN ACOSTA
 ENGINEERING SPECIALIST III
 20922 - WW

ARTURO ARANDA
 ENGINEERING SPECIALIST II
 20113 - PW/WW

KATIE CRAVER
 ENVIRONMENTAL SPECIALIST II/CWE
 20920 - ERP/404

EMILY GREER
 ENVIRONMENTAL SPECIALIST I
 20183 - ERP/404

JOHN DAVIS
 PROFESSIONAL GEOLOGIST III
 20102 - DW/WCU/GW

RITA FELTON-SMITH
 ENGINEERING SPECIALIST IV
 11533 - AIR

MICHAEL BOGIN
 ENGINEERING SPECIALIST IV
 11318 - SW

TIM FREEMAN
 ENGINEERING SPECIALIST II
 10908 - WCU

TAYLOR HOHMANN
 ENVIRONMENTAL SPECIALIST II/CWE
 00027 - ERP/404

MARK MAROUSKY
 ENVIRONMENTAL SPECIALIST II/CWE
 11119 - ERP/404

TED HUGHES
 ENGINEERING SPECIALIST II
 20921 - WW

JENNIFER LYLES
 ENGINEERING SPECIALIST IV
 11453 - PW/WW

STEVEN GOTHAM
 ENVIRONMENTAL SPECIALIST III
 11508 - AIR

CONOR LUCEY
 ENVIRONMENTAL SPECIALIST I
 11017 - WW/PW

MAUREEN MORAN
 ENVIRONMENTAL SPECIALIST II/CWE
 00182 - ERP/404

MARGARET MULDER
 ENVIRONMENTAL SPECIALIST I
 10878 - ERP/404

JENNIFER PAUL
 ENVIRONMENTAL SPECIALIST II
 10901 - WCU

STEPHEN SPENCE
 ENGINEERING SPECIALIST II
 10187 - WW/PW

ROB MARTIN
 PROFESSIONAL GEOLOGIST II
 11330 - WW/GW

DARRIN MCKEEHEN
 PROFESSIONAL GEOLOGIST I
 10844 - WCU/PCU

SCOTT WARNER
 ENVIRONMENTAL SPECIALIST I
 10740 - ERP/404

ASIA AUGUSTINE
 OPS ENVIRONMENTAL SPECIALIST III
 37950276

PHILIPPE-SERGE HOOK
 OPS ENVIRONMENTAL SPECIALIST I
 37936049

LESLIE MAYBIN
 ENGINEERING SPECIALIST IV
 10386 - AIR

SARA HEULER
 OPS ENVIRONMENTAL SPECIALIST I
 37934056

SERENA MANZI
 OPS ENVIRONMENTAL SPECIALIST III
 37950268

VACANT 01.13.22
 OPS ENVIRONMENTAL SPECIALIST I
 37934023

VACANT 03.25.22
 OPS ENVIRONMENTAL SPECIALIST I
 37960070

VACANT 04.16.22
 ENVIRONMENTAL SPECIALIST III
 10091 - ERP/404